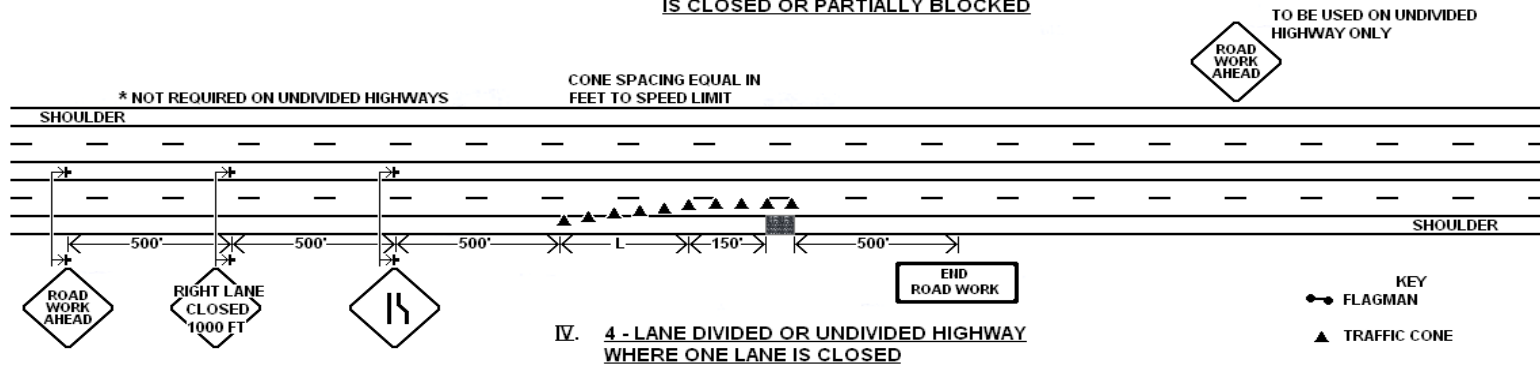
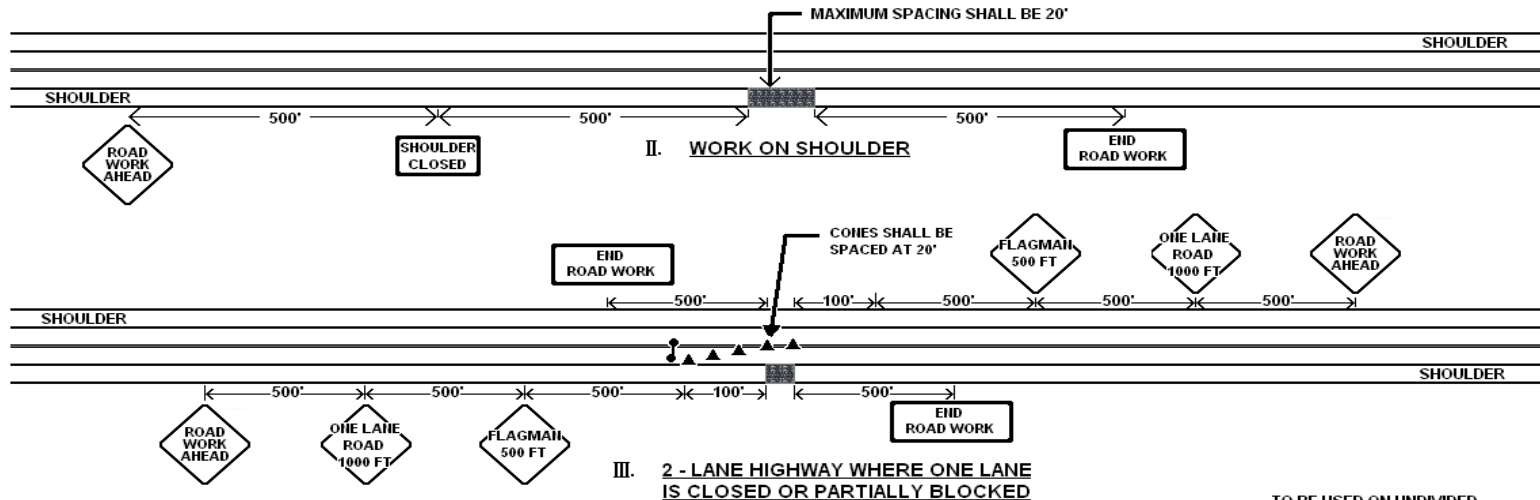


Appendix F

TRAFFIC CONTROL

I. NO WORK ON ROADWAY - No Traffic Control Required



NOTES:

1. If The Work Remains In Operation During Hours Of Darkness, Type II Barricades Or Drums Should Be Used In Lieu Of Cones. Lights Should Be Provided To Mark Flagman Stations And Barricades At Night.
2. Taper Formula:

$$L = S \times W$$
for speeds of 45 mph or more

$$L = \frac{W S^2}{60}$$
for speeds of 40 mph or less
Where:
L = Minimum length of taper.
S = Numerical value of posted speed limit.
W = Width of offset.

3. Warning Signs Shall Have A Black Symbol or Message On An Orange Background.
4. Sign Supports May Be Fixed Or Portable Depending Upon Time Duration Of Project.
5. All Signing Shall Be In Compliance With The Manual On Uniform Traffic Control Devices.
6. This Plan Is Subject To Modifications By The District Engineer.
7. All Signs Shall Be ReflectORIZED As Per Sect. 604, AHTD Standard Specifications.
8. The Desirable Size Of Warning Signs (Diamond-Shaped Signs) Is 48" X 48". The Minimum Size Is 36" X 36".
9. Supports For Signs, Barricades, And Vertical Panels Must Meet The Requirements Of NCHRP-350.

- KEY
- ◀ FLAGMAN
 - ▲ TRAFFIC CONE
 - VERTICAL PANEL, DRUM OR BARRICADE

TRAFFIC CONTROL FOR ACCESS DRIVEWAY CONSTRUCTION

Drawing AD-8

